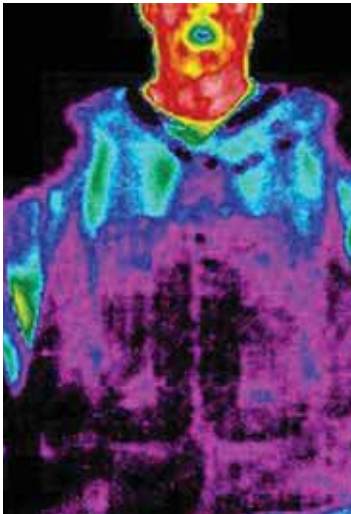


## Our Mission

- To serve as the principal international resource for current information on research, practices and materials available for technical and safety fabric products
- To represent the interests of the advanced materials textile industry for safety and protective applications
- To promote the use of safety and protective products



# Safety and Protective Products Division



### SPPD is dedicated to our members' success.

- We proactively seek solutions for safety and protective fabric industry concerns
- We promote the use of technical fabrics in safety and protective products
- We provide opportunities for accessing information and education about technical textiles used in safety and protective products
- We generate valuable networking opportunities

### Your membership delivers valuable benefits for your company.

- Easy access to industry news, organizations, standards and regulations, buyers and sellers on [www.safetyfabrics.com](http://www.safetyfabrics.com)
- Mentoring opportunities with the Safety Products Student Design Challenge
- Outstanding education available at the International Conferences on Safety and Protective Fabrics and at annual IFAI Expo technical textiles symposia
- Subscriptions to Safety and Protective Products Division newsletters and the *Industrial Fabric Products Review* magazine
- Unlimited use of IFAI's Market Research Service and Information Central, sources for answers to technical questions and market trends
- Reduced prices on IFAI-sponsored expos, advertising, classes, bookstore merchandise, including technical books, and business services

For more information please contact us:

Phone: +1 651 225 6920 or 800 636 4942

E-mail: [rastephens@ifai.com](mailto:rastephens@ifai.com)

[www.safetyfabrics.com](http://www.safetyfabrics.com)



**SPPD** | SAFETY & PROTECTIVE  
PRODUCTS Division  
INDUSTRIAL FABRICS Association International

<b>1. Company Information</b>		Organization Name	
Main Contact Name	Title	E-mail Address	
Complete Mailing Address			
City, State, Zip with Country			
Telephone	Fax	Web Site	
Type of Business/Primary Products		No. of Employees	

<b>2. Membership Categories &amp; Web Link Options</b>	
For a description of the SPPD division, visit our Web site at <a href="http://www.safetyfabrics.com">www.safetyfabrics.com</a> .	
<p><b>Supplier membership</b> Manufacturers, processors or distributors of fibers, yarns, treatments, fabrics, films, findings, equipment and other related products for specialty fabrics end-product manufacturing. Testing laboratories, consultants and sales and marketing companies also are included in this category.</p> <p><b>Sponsoring membership</b> For divisions, subsidiaries or wholly owned companies of supplier and end-product manufacturer members in good standing.</p> <p><b>Affiliate membership</b> For zone organizations, other associations, publications, colleges and universities, specifiers and government agencies.</p> <p><b>End-product manufacturer membership</b> For firms that manufacture, sell or rent end products made from specialty fabrics. Classes are based on company sales.</p>	<p style="text-align: center;"><b>Safety and Protective Products Division</b></p> <p><input type="checkbox"/> Supplier membership - \$1,185</p> <p><input type="checkbox"/> Sponsoring membership - \$435</p> <p><input type="checkbox"/> Affiliate membership - \$335</p> <p style="text-align: center;"><b>End Product Manufacturing Company</b></p> <p>AA: Sales over \$2 million - \$1035</p> <p>A: Sales of \$1 million to \$2 million - \$940</p> <p>B: Sales of \$250,000 to \$1 million - \$710</p> <p>C: Sales of \$100,000 to \$250,000 - \$485</p> <p>D: Sales under \$100,000 - \$360</p> <p style="background-color: yellow;">If you are a current member of IFAI, contact the membership department (+1 651 222 2508) to add a division.</p> <p><input type="checkbox"/> Web Link (\$25)</p>

OFFICE USE ONLY: \_\_\_\_\_  
IFAI REP: \_\_\_\_\_

**Safety and Protective Products Division  
Industrial Fabrics Association  
International**

1801 County Road B W.  
Roseville, MN 55113-4061 USA  
Phone: +1 651 225 6920  
or 800 636 4942 (U.S. & Canada)  
Fax: +1 651 631 9334  
E-mail: [rastephens@ifai.com](mailto:rastephens@ifai.com)  
Web site: [www.safetyfabrics.com](http://www.safetyfabrics.com)  
or [www.ifai.com](http://www.ifai.com)

**Rates Valid through 5/31/2009**

<b>3. Payment</b>	
Membership is payable in U.S. funds or check drawn on a U.S. bank in U.S. Funds. For payment options outside the U.S., please contact IFAI or <a href="http://www.ifai.com/Home/payment.cfm">www.ifai.com/Home/payment.cfm</a> . Make payable to: Industrial Fabrics Association International.	
TOTAL FEES:	_____
Membership	_____
Web Link	_____
Total Due	_____
<input type="checkbox"/> Check enclosed payable to IFAI <input type="checkbox"/> Wire transfer (please enclose confirmation) CHARGE MY:	
<input type="checkbox"/> American Express	<input type="checkbox"/> Discover
<input type="checkbox"/> MasterCard	<input type="checkbox"/> Visa
NOTE: Charges on your credit card will appear with the name Industrial Fabrics Association International / Direct Marketing *CID: Cardholder's Identification Number – American Express: 4 digit number on front of card; VISA, MasterCard, Discover: 3 digit number on back of card.	

Cardholder's Name	_____
Credit Card Number	_____
Expiration Date	_____
Authorized Signature	_____
Date Signed	_____ *CID No.

The membership shall be in the name of the company and one person shall be designated to represent the firm in matters affecting association membership. IFAI member benefits and services are for the sole use of the member company and their full-time employees. \$71 of your annual dues goes toward a subscription for the *Specialty Fabrics Review* or, if specified, another of IFAI's magazines. For companies located outside the USA: In compliance with the U.S. Omnibus Budget Reconciliation Act of 1993; for those companies located in the U.S., 15% of your membership dues are attributable to lobbying expenditures and are therefore not deductible as a business expense for tax purposes. Further information on tax laws could be obtained from your tax advisor.